

Nebo School District

School Access Route Plan

Hobble Creek Elementary

2018 /2019 School Year

School Access Route Plan

Hobble Creek School

In accordance with state standards, Hobble Creek School has identified school access routes for Hobble Creek School students who live within the walk boundary established for the school. A map showing the identified routes can be viewed by following the link below. (Insert a link or give other instruction on how to access the map)

The intent of a School Access Route Plan is not to identify every school access route or to identify the more convenient school access routes; it is to identify main walk/bike routes that appear to be secure. Care has been taken to consult with local law enforcement, school PTA and School Community Council representatives, and the District's traffic safety committee in establishing these school access routes. Despite broad consultation and unanimous agreement from all parties involved in establishing these routes, no one, including the Nebo School District and Hobble Creek School can guarantee that the agreed upon school access routes are or will ever be completely free from hazards.

Parents are encouraged to walk or bike the school access routes with their child/children, to address specific concerns they may have, and to instruct their child/children to obey the laws and rules pertaining to pedestrian safety. If a parent feels their child/children should use a school access route that is not identified in this plan, it is their prerogative to instruct their child/children as to what they feel is best for them.

As previously stated, the intent of a School Access Route Plan is not to identify every school access route or to identify the more convenient school access routes. For this plan, school access routes leading to the school from areas where clusters of students live, have been identified and are described below.

School Access Route Descriptions:

1. The walking routes on the street system within the school boundaries. (See Map)
 - a. Students living west of Main Street will cross Main Street at either 1200 N. or 1600 N.
 - b. Students living south of 1200 N. will cross 1200 North at 700 E. or 1000 E.
 - c. Students living east of 1200 E. will cross at 1600 N.
 - d. Students living between Main Street and 1000 E. and north of 1200 N. will cross at 1000 E. 1300 N.

- e. Students living in Springville are discouraged from traveling to school by any means other than automobile or bus due to a lack of sidewalks or crosswalks between their neighborhood and Mapleton.

2. The school location:

- a. Hobble Creek Elementary is located at 1145 E. 1200 North in Mapleton, Utah. Student may access the school from the east side at 1200 East through the gap in the fence. They can access the school from the west through the gap in the fence at 1000 E. and 1300 N. The south side or front of the school is on 1200 N and only accessed by automobiles and buses.

3. Existing traffic controls

- a. There are no traffic lights affecting the walking routes at Hobble Creek. There are appropriate stop signs at all intersections. The school parking lot is well marked with traffic control signs and the fluorescent green curbs indicate no parking and bus loading zones.

4. Established school crossings

- a. There are two school crossings with a traffic guard serving Hobble Creek. One is at 1000 E and 1200 N. The other is at 1000 E 1300 N.

5. Loading/unloading areas for bus students & parent drop off area

- a. The parking lots are marked with arrows indicating exits and entrances. All traffic in the school parking lots and bus lane enters from 1200 North.

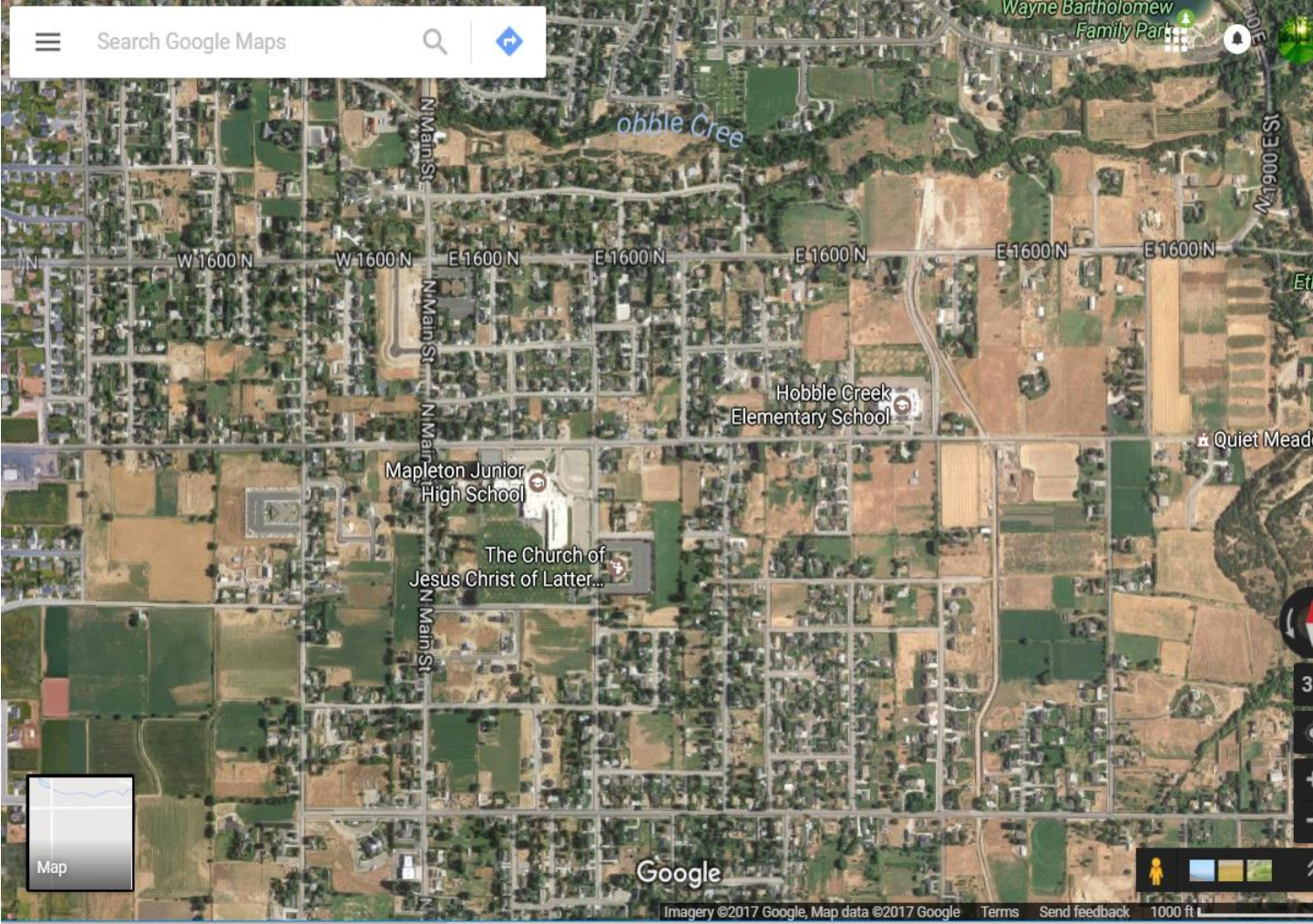
- b. Bus loading area is well-marked and patrolled by a faculty member before and after school.

- c. An explanation of the plan.
 - a. This narrative with the map is the explanation of the plan.

- d. Instruction to parents to walk the route with their children
 - a. This narrative is given to parents along with the map. Parents are asked to walk the route with their children to ensure best access from individual homes to the main routes indicated on the plan.

 - b. These instructions are sent home at the beginning of each school year in the information packet given to all families at the School Open House.

Search Google Maps



Google

Imagery ©2017 Google, Map data ©2017 Google Terms Send feedback 1000 ft

District-City-UDOT Items

2018 /2019 School Year

Note to principal:

- If there are no safety items to list, please write “No Safety Items” anywhere on the form.
- At the bottom of this form, always print the name of the school and sign the form.

Please type in your safety items. The table rows will expand and the text will wrap.

Issues Requiring Attention from the Nebo School District	<u>NEW</u> Issues Requiring Attention from a City or UDOT	<u>PAST</u> Issues Requiring Attention from a City or UDOT
		We would like sidewalks on both sides of 1200 N
		We would like a flashing “school crossing” sign on 1200 N
	We need an additional crosswalk and path on 1150 East. Students are walking north along 1150 East and cutting through the roads diagonally from the west sidewalk of 1150 East to the north side of 1600 North. Cars coming around the corner eastbound on 1600 North and turning onto 1150 East do not see these children. If there were a crosswalk and path that led from the gate opening on 1150 East to the Mapleton walking/biking path, students would use that to then walk to 1600 North. A flashing sign on 1600 North would also help.	

